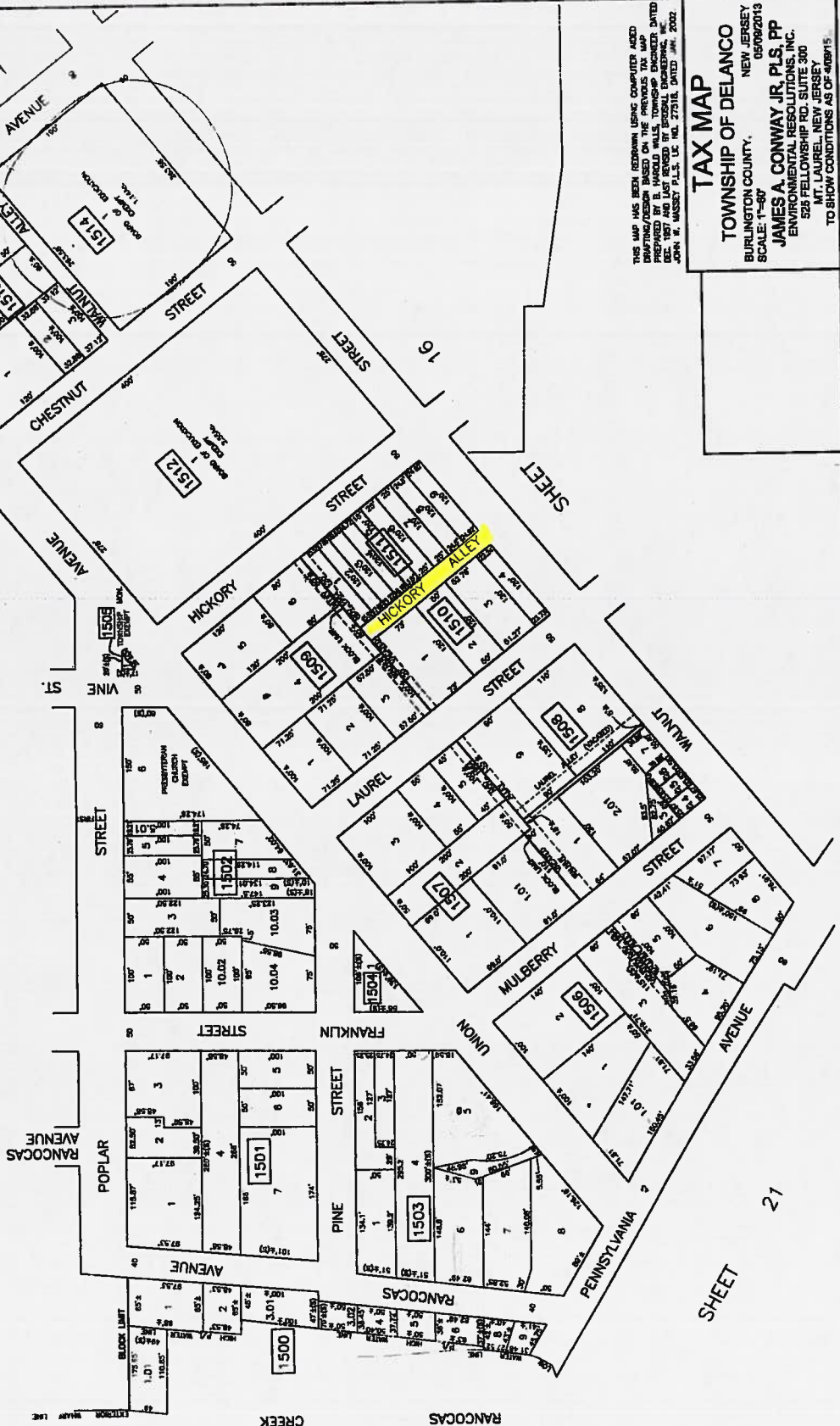


| REVISIONS | NO. | DATE | NAME | IND. |
|-----------|-----|------|------|------|
| | | | | |
| | | | | |
| | | | | |



THIS MAP HAS BEEN REDRAWN USING COMPUTER AIDED DRAFTING/DESIGN BASED ON THE PREVIOUS TAX MAP PREPARED BY B. HAROLD WALLS, TOWNSHIP ENGINEER, DATED DEC. 1987 AND LAST REVISION BY JOHN W. HANSEN, P.L.S., DATED JAN. 2002.

TAX MAP
 TOWNSHIP OF DELANCO
 BURLINGTON COUNTY, NEW JERSEY 0802015
 SCALE: 1"=80'
JAMES A. CONWAY JR., PLS., PP
 ENVIRONMENTAL RESOLUTIONS, INC.
 525 FELLOWSHIP RD. SUITE 300
 MT. LAUREL, NEW JERSEY
 TO SHOW CONDITIONS AS OF 4/08/05