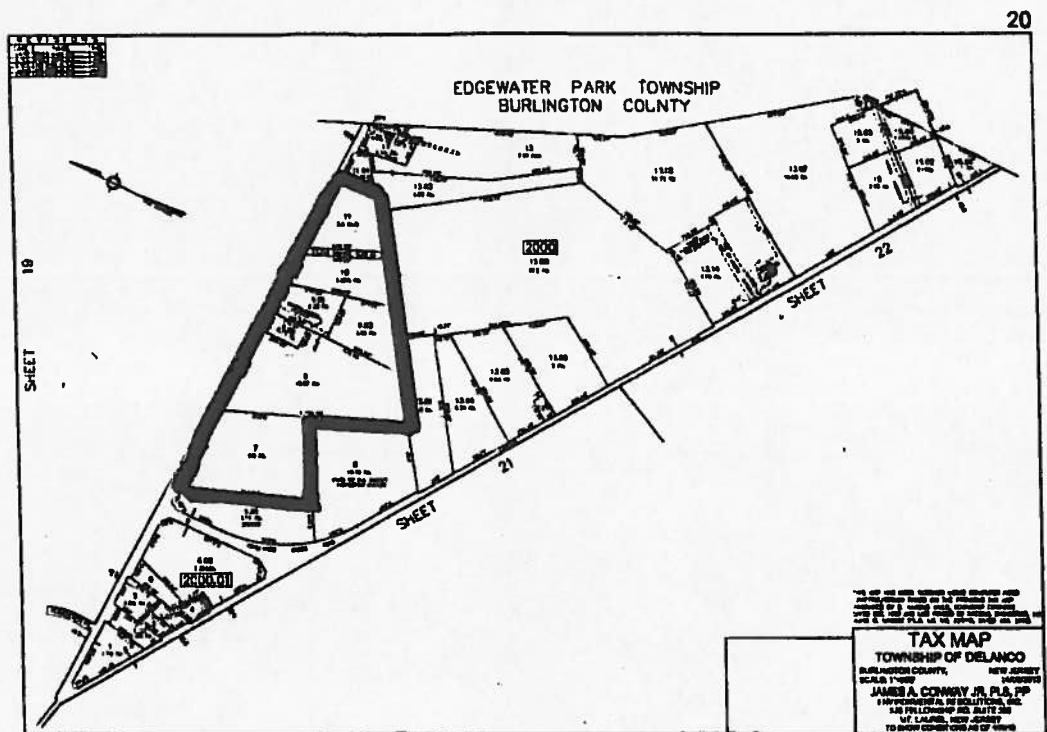


The amendments to the Land Use Plan will be accomplished utilizing an overlay zone district. The overlay zone is bordered to the north by Coopertown Road, to the east by the eastern boundary of lot 11, in block 2000; to the south by the southern boundaries of lots 7, 9, 9.01, 9.02, 9.03, 10, 11, and 11.02 in block 2000; and to the west by the western boundary of lot 7.



Edge T

Behavioral Health Overlay Zone

Area zoned
industrial since 1957

